

CHARACTER MODULE INITIALIZATION

Internal Reset Circuit

The module is automatically initialized when the power is applied. The following commands are executed during initialization. The busy flag is kept in the busy state until initialization is complete. The busy state lasts for 10 ms after V_{DD} reaches 4.5 volts.

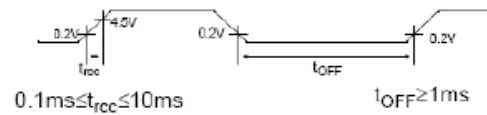
- 1) Clear Display
- 2) Function set
 DL=18-bit data length for interface
 N=0Single-line display
 F=05x7 dot matrix character font
- 3) Display ON/OFF Control
 D=0Display OFF
 C=0Cursor OFF
 B=0Blink function OFF
- 4) Entry Mode Set
 I/D=1Increment Mode
 S=0Display shift OFF

NOTE:

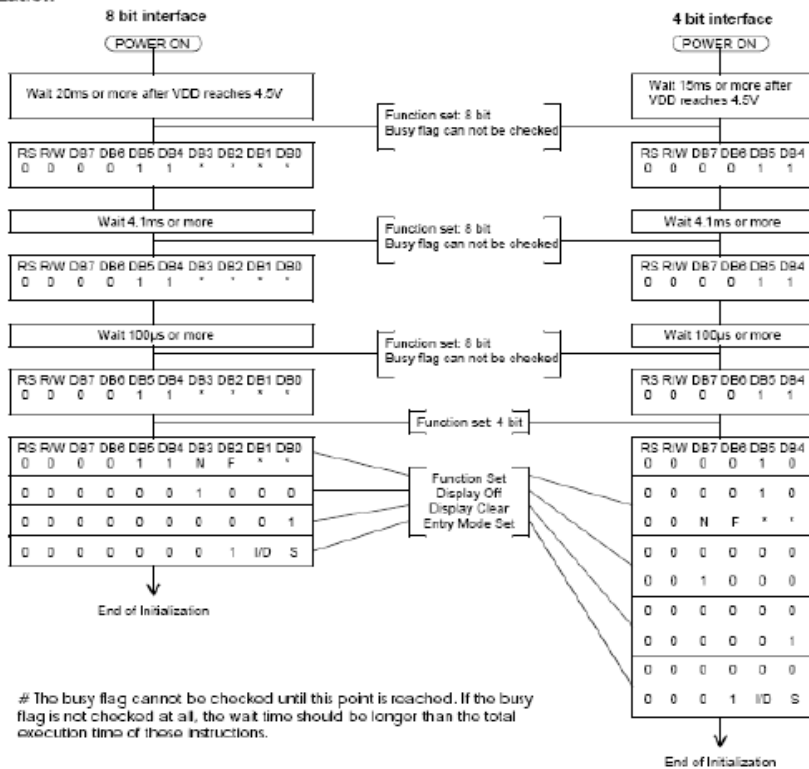
If the following power conditions are not satisfied, the internal reset circuit does not function properly. In this case, the initialization should be executed by the series of instructions from outside the MPU (Software Initialization).

Power Conditions for Internal Reset

ITEM	SYMBOL	MIN	TYP	MAX	UNIT
Power Supply Rise time	t_{rcc}	0.1	-	10	ms
Power Supply Off time	t_{OFF}	1.0	-	-	ms



Software Initialization



■ DISPLAY COMMANDS

INSTRUCTION	CODE										Description
	RS	R/W	DB7	DB6	DB5	DB4	DB3	DB2	DB1	DB0	
1: Clear Display	0	0	0	0	0	0	0	0	0	1	Clears entire display and sets DD RAM address 0 in address counter .
2: Return Home	0	0	0	0	0	0	0	0	1	*	Sets DD RAM address 0 in address counter . Also returns display from being shifted to original position . DD RAM contents remain unchanged .
3: Entry Mode Set	0	0	0	0	0	0	0	1	I/D	S	I/D=1 : Increment I/D=0 : Increment S=1 : Accompanies display shift
4: Display On/Off	0	0	0	0	0	0	1	D	C	B	I/D=1/0 : Display on/off I/D=0/1 : cursor on/off S=1 : Blink of cursor
5: Cursor /Display shift	0	0	0	0	0	1	S/C	R/L	*	*	S/C=1 : Display shift S/C=0 : Cursor move R/L=0 : Shift to left R/L=1 : Shift to right
6:Function Set	0	0	0	0	1	DL	N	F	*	*	DL=1 : 8 bits , DL=0 : 4 bits N=1 : 2 lines , N=0 : 1 line F=1 : 5*10 dots , F=0 : 5*8 dots
7: Set CG RAM Address	0	0	0	1	A _{CC}					A _{CC} : CG RAM address	
8: Set DD RAM address	0	0	1	A _{DD}					A _{DD} : DD RAM address corresponds to cursor address		
9: Read busy flag/address counter	0	1	BF	A _C					BF=1 : Busy , BF=0 : Not busy A _C : Address counter used for both of CG and DD RAM address		
10:Write data	1	0	WRITE DATA								Write data to CG or DD RAM
11:Read data	1	1	READ DATA								Read data from CG or DD RAM

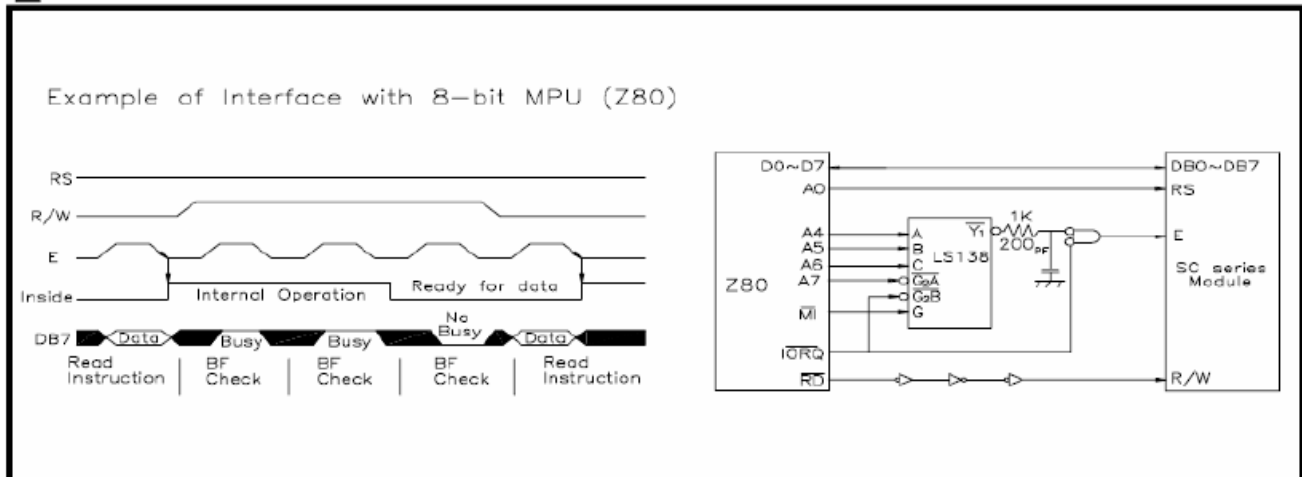
☆ Execution Time (Et) of Instruction : (Under condition of $f_{osc} = 270 \text{ KHz}$)

1 & 2 : Et=1.52 ms

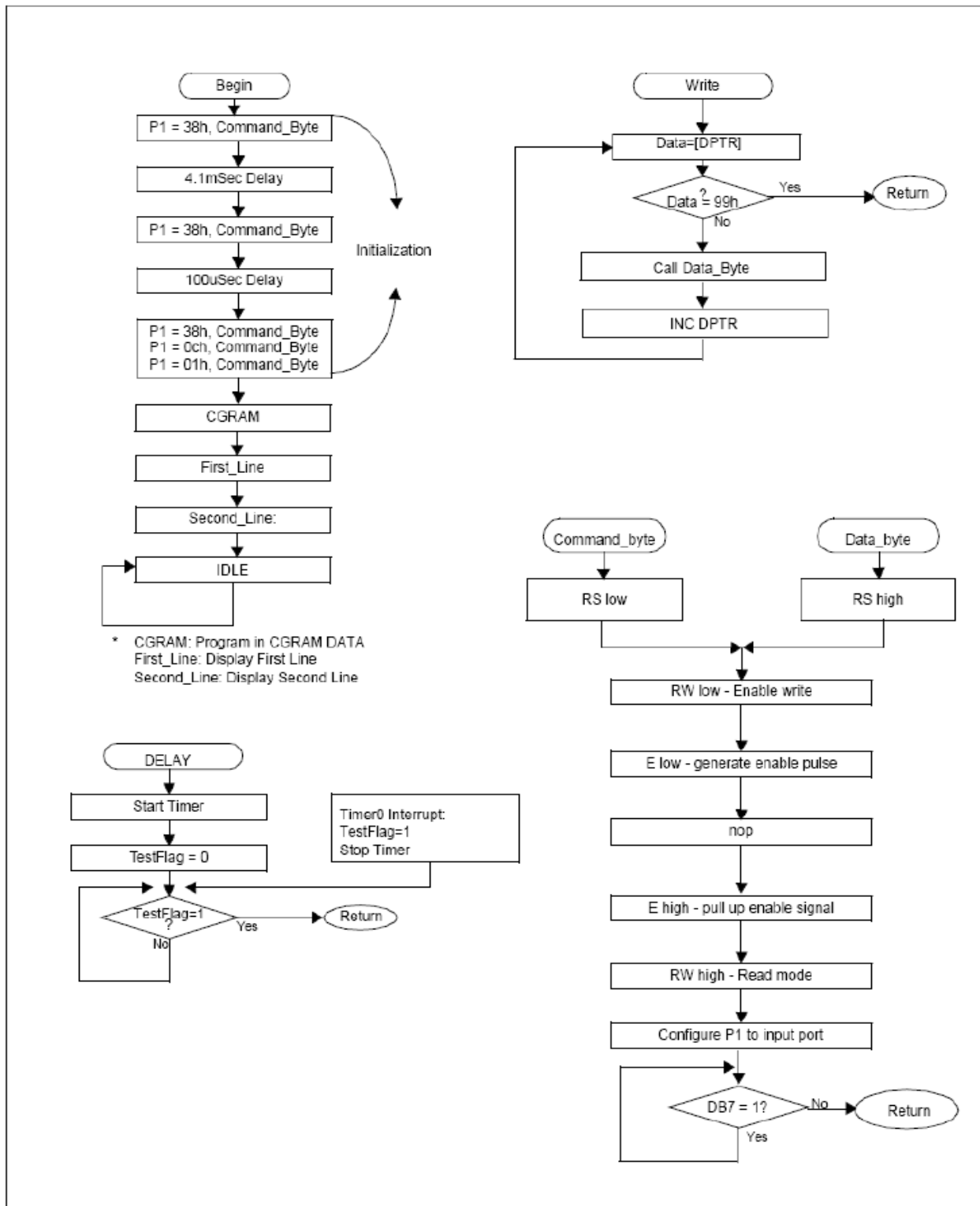
3 ~ 11 : Et=37 μ s

☆ "*" : Either 0 or 1

■ CONNECTING BLOCK DIAGRAM



III. Software Flowchart:



PIN ASSIGNMENT

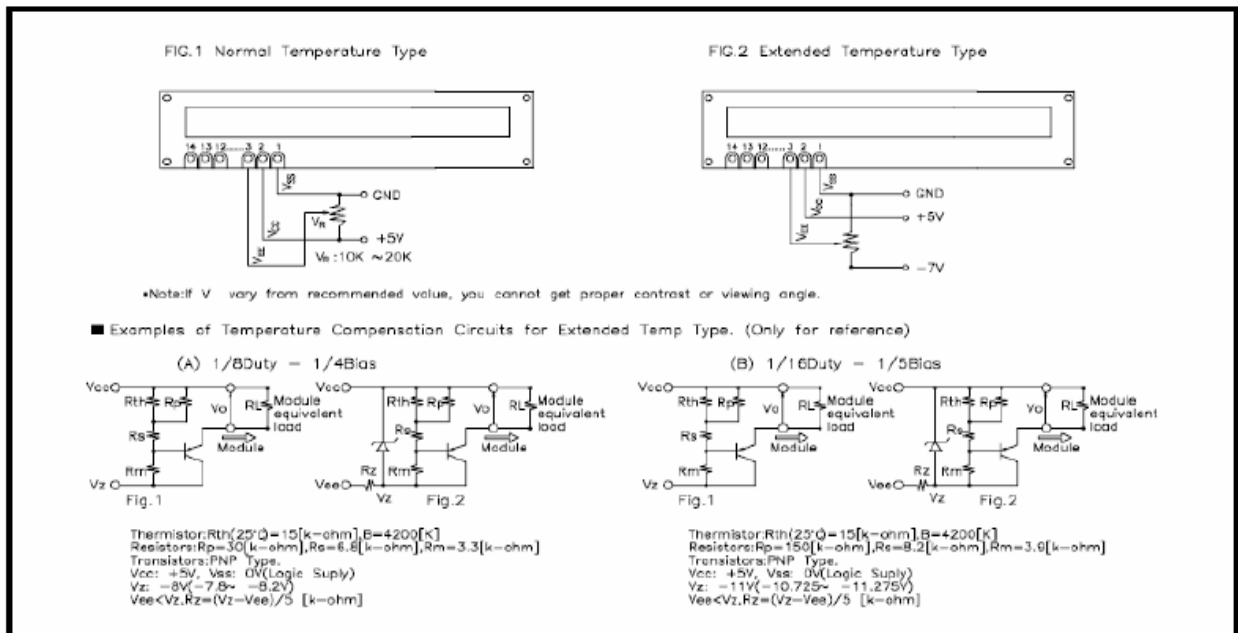
PIN NO.	SYMBOL	LEVEL	FUNCTION
1	V _{SS}	-	Power Supply
2	V _{DD}	-	
3	V _O	-	
4	RS	H / L	Selects Registers H: Data register (When Writing And Reading) L: Instruction Register (Writing) Busy Flag And Address Counter (Reading)
5	R / W	H / L	Read/Write Select Signal H: Data read (Module→MPU) L: Data write (Module→MPU)
6	E	H, H→L	Enable Signal
7	DB0	H / L	Databus lines, see description below DB4~DB7: High-order lines of data bus with three-state, bi-directional function for use in data transfer with the MPU. DB7 may also be used to check the busy flag. DB0~DB3: Low-order lines of data bus with three-state, bi-directional function for use in data transfer with the MPU. These lines are not used when interfacing with a 4-bit microprocessor.
8	DB1	H / L	
9	DB2	H / L	
10	DB3	H / L	
11	DB4	H / L	
12	DB5	H / L	
13	DB6	H / L	
14	DB7	H / L	

ELECTRIC MAXIMUM RATINGS

ITEM	SYMBOL	MIN	MAX	UNIT	REMARKS
Power Supply For Logic	V _{DD} -V _{SS}	-0.3	7.0	V	
Signal Input Voltage	V _{IN}	-3 ≤ V _{IN} ≤ V _{DD} +0.3		V	
Static Electricity	-	-	100	V	See Note

Note: Electro-static discharge resistance is tested by charging a 200pf capacitor and discharging it by contact with a interface connector pin .

EXAMPLE OF POWER SUPPLY



Deepakshi Display Devices Pvt Ltd.

<u>Application Note</u>	
<pre> ;***** ; ;Application Note: ;----- ;----- ;Displaying Characters on 2002 LCD Module ;Description: Demo software to display ; ;characters. ; Controller: AT89S52 ;***** Equates ;***** lcdport data p1 e equ p3.3 rw equ p3.1 rs equ p3.0 ;***** ; Interrupt Vectors ; ***** org 000h jmp start ; Power up reset vector org 003h reti ; External interrupt 0 vector org 00bh reti ; Counter/ Timer 0 int vector org 013h reti ; External int 1 vector org 01bh ; reti ; Timer 1 int vector org 023h reti ; I2C serial int vector ;***** ;Start Program ;***** start: acall init main: acall delay_large mov dptr,#ka acall nxt call init1 mov dptr,#k1 acall nxt here: ajmp here </pre>	<pre> nxt: clr a movc a,@a+dptr cjne a,#0ffh,go_on ret go_on: acall datawr acall delay inc dptr mov p1,a ajmp nxt command: setb e clr rs clr rw mov p1,a clr e ret datawr: setb e setb rs clr rw mov p1,a acall delay clr e ret ;***** ;INITIALIZATION ;***** init: mov a,#38h ;function set acall command acall delay mov a,#38h ;function set acall command acall delay mov a,#38h ;funtion set acall command acall delay mov a,#0ch ;display on/off acall command acall delay mov a,#01h ;clear display acall command acall delay mov a,#80h ;set ddram acall command acall delay ret </pre>

```

init1:
        mov a,#0c0h    ;set ddram
        acall command
        acall delay
        ret

;*****
ka:      db    '*DEEPAKSHI DISPLAY*','0ffh
k1:      db    '*DEVICES PVT. LTD. *','0ffh
;*****
;DELAY
;*****

delay_large:  mov r4,#32
abc:         mov r5,#100
sm:         mov r6,#100
mn:         djnz r6,mn
            djnz r5,sm
            djnz r4,abc
            ret

delay:       mov r4,#05d    ; delay of 60ms
delay1:     mov r5,#60d
la:         djnz r5,la
            djnz r4,delay1
            ret
            end

```